

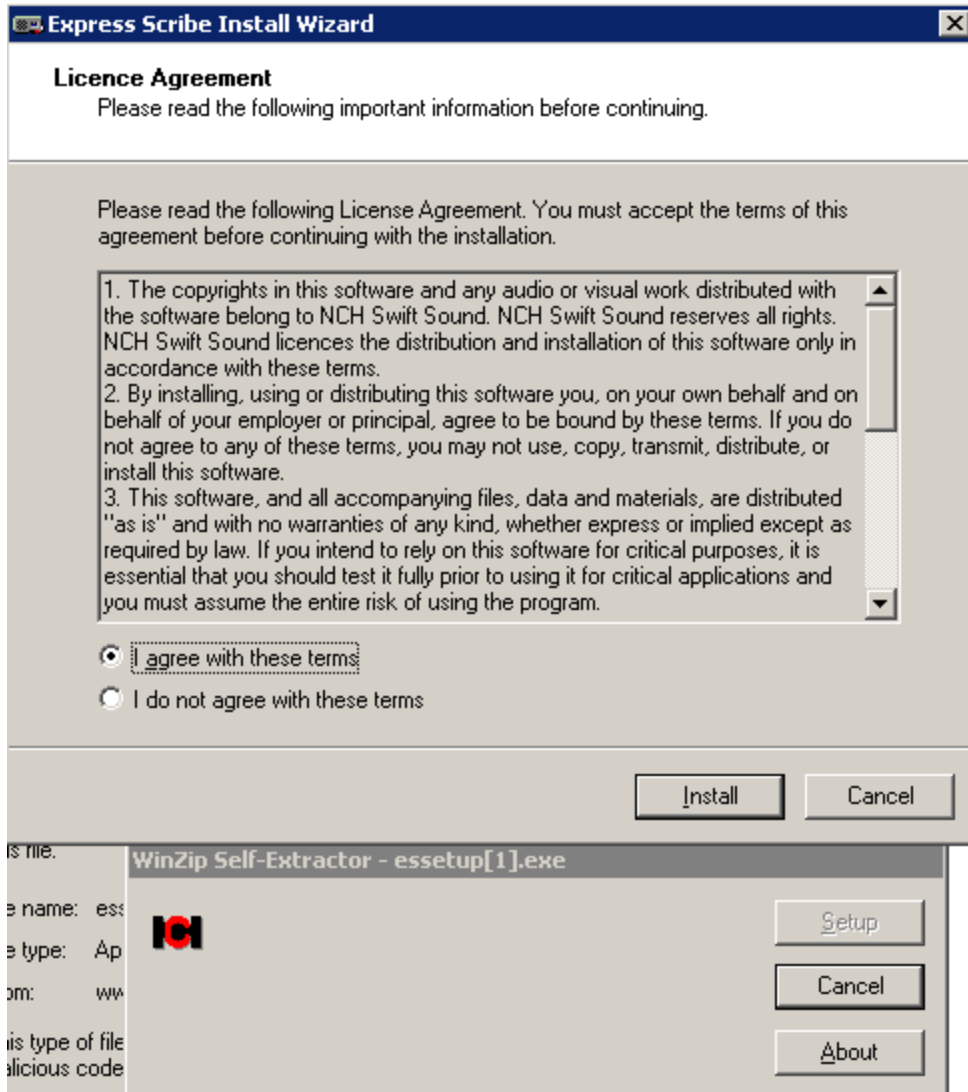
1. Go to the Express Scribe download page located at: <http://www.nch.com.au/>
2. Click on the “Download Windows” button:

The screenshot shows a Microsoft Internet Explorer browser window displaying the Express Scribe download page. The browser's address bar shows the URL: <http://www.nch.com.au/scribe/index.html?ref=google&ref2=c4expresscribe>. The page features the NCH Swift Sound logo and a navigation menu with links for Home and Products. The main heading is "Express Scribe Transcription Playback Software". The page contains descriptive text about the software's features, a list of recommended dictation applications, and two prominent red buttons: "Download Windows" and "Download Mac OS X". A sidebar on the right lists various links such as "Introduction", "Features", "System Requirements", "Screenshots", "Foot Pedals", "Manual", "Downloads" (with sub-links for - exe file, - zip file, - dmg file, - st file), "Introduction", "Development", "Questions", and "Technical Support".

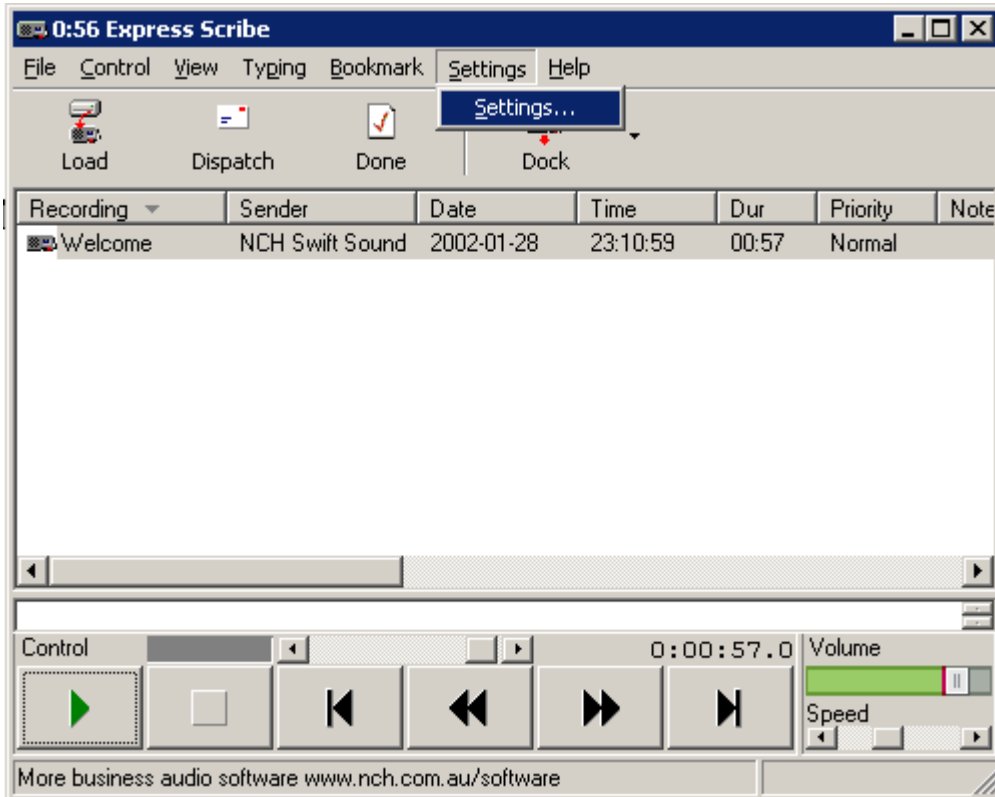
3. Select open from the file download box:

The screenshot shows a Windows "File Download" dialog box. The title bar reads "File Download" with a close button. A question mark icon is next to a warning message: "Some files can harm your computer. If the file information below looks suspicious, or you do not fully trust the source, do not open or save this file." Below the message, the following file information is displayed: File name: essetup.exe, File type: Application, From: www.nch.com.au. A yellow warning triangle icon is next to the text: "This type of file could harm your computer if it contains malicious code." The question "Would you like to open the file or save it to your computer?" is followed by four buttons: "Open", "Save", "Cancel", and "More Info". At the bottom, there is a checked checkbox labeled "Always ask before opening this type of file".

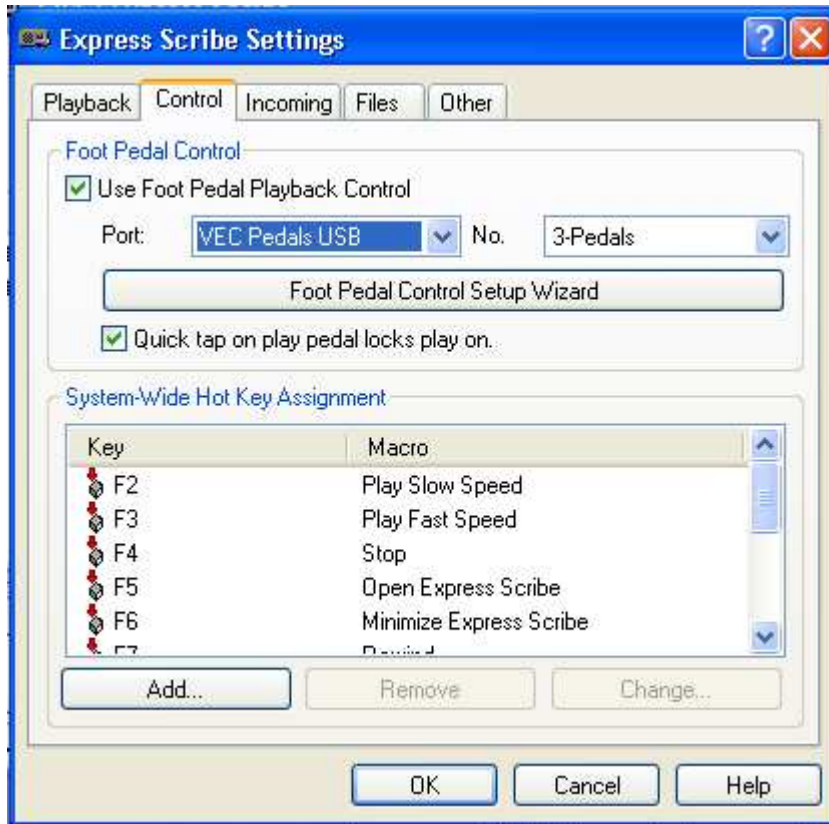
4. Agree to the terms and conditions and click install.



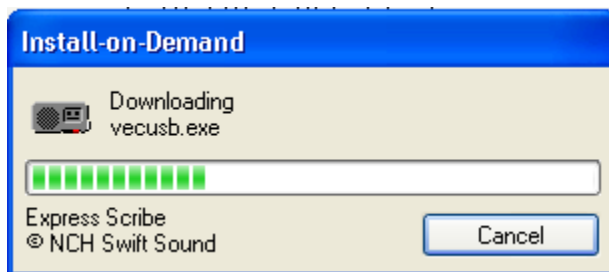
5. You will then see the Express Scribe software box come up. Select settings from top menu and the Settings from the drop down.



6. Select the control tab from the menu and from the port drop down select VEC Pedals USB (please make sure your pedals are connected to a USB port on your machine). Then click on the foot pedal control setup wizard. From there please follow the instructions give to configure the foot pedals.



7. A VEC Download window will load and USB drivers will download.



8. Once the install is complete a window will pop saying pedal installed. A series of a few steps will pop up to align rewind, fast forward and play pedals.